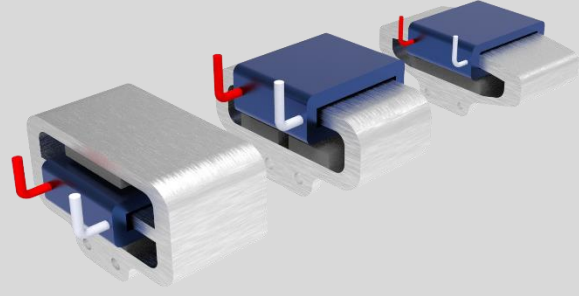


RVC Series Rotary Voice Coil Motors

Various Frame Sizes

www.mdsmotor.com



MDS Motor
Feel the perfect motion...

Kocaeli Üniversitesi Teknopark |
Vatan Cad. No:83 |41275 |
Başiskele, Kocaeli, Türkiye

RVC Series Rotary Voice Coil Motors

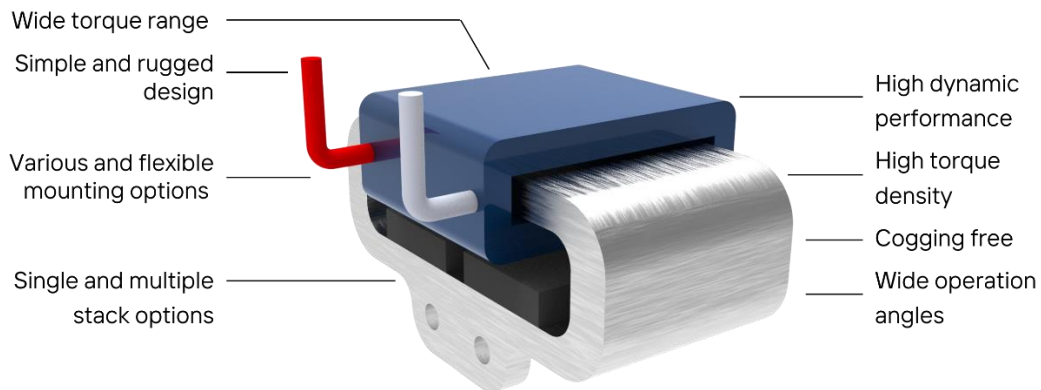
RVC Motors are the new motor family developed by MDS Motor for applications requiring limited angle rotation. They deliver high torque density in compact size and lightweight design.

Rotary Voice Coil (RVC) motors are ideal actuators for high acceleration applications with limited angular operation. Two types of designs are available in RVC motor topologies: Cylindrical RVC motors and arc-segmented RVC motors with single or multiple cover/base components. The arc-segmented type RVC motors are excellent solutions for short stroke and precise positioning applications. These direct drive motors offer zero cogging and zero backlash, enabling high acceleration. Key applications for RVC motors include medical, industrial, defense and aerospace.

Main Features and Benefits

- High dynamic performance
- High torque density
- No cogging
- Rugged design and production
- Wide torque range
- Wide operation angles
- Various and flexible mounting options
- Single and multiple stack options

Description of RVC Rotary Voice Coil Motors



Product	Peak Torque (Nm)	Torque Constant(Nm/A)	Range of motion (degrees)	Motor Constant (Nm/W)
RVC71-126-02-M02	2.0	0.69	±4	0.22
RVC85-170-04-M01	4.0	0.667	±3	0.361
RVC85-200-05-M02	4.8	0.792	±3	0.429