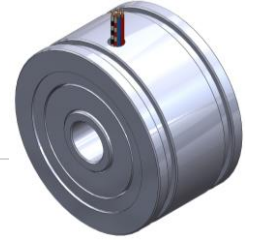


MYM-15 Technical Information

Features

- Hollow shaft ID: 8 mm
- Outer diameter: 36.8 mm
- Length: 21.3 mm

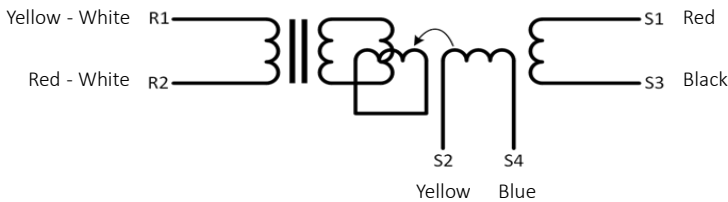


MYM-15 Electrical Data

MDS.MYM-15

Primary Side	R ₁ -R ₂
Pole pairs	1
Transformation ratio	0.5±10%
Input Voltage	5 V _{rms}
Input Current	58 mA
Input frequency	4.5 kHz
Phase shift	-15° ± 2°
Null Voltage	30mV _{max}
Z _{ro}	55+80j Ω
Z _{rs}	50+75j Ω
Z _{so}	195+390jΩ
Z _{ss}	190+360j Ω
R1-R2 DC resistance	42 Ω ± 10% (@20°C)
Stator DC resistance	76 Ω ± 10% (@20°C)
Accuracy	±10'
Operating temp.	-50°C / +155°C

MYM-15 Schematic and Technical Drawings



Input: $E(R_1-R_2) = E \sin(\omega t)$

Output: $E(S_1-S_3) = Tr \times E(R_1-R_2) \cos\theta$
 $E(S_2-S_4) = Tr \times E(R_1-R_2) \sin\theta$

T_r: Transformation ratio

