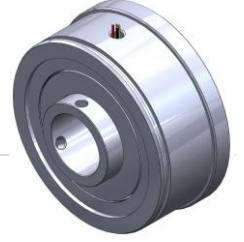


# MYM-27 Technical Information

## Features

- Hollow shaft ID: 22 mm
- Outer diameter: 72 mm
- Length: 35.5 mm

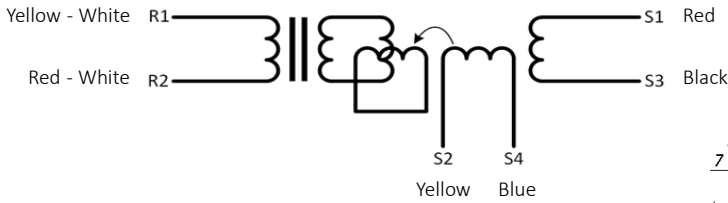


## MYM-27 Electrical Data

MDS.MYM-27

Primary Side	R <sub>1</sub> -R <sub>2</sub>
Pole pairs	1
Transformation ratio	0.5±10%
Input Voltage	5 Vrms
Input Current	20 mA
Input frequency	8 kHz
Phase shift	-6° ± 2°
Null Voltage	20mVmax
Z <sub>ro</sub>	95+255j Ω
Z <sub>rs</sub>	90+245j Ω
Z <sub>so</sub>	500+1600jΩ
Z <sub>ss</sub>	465+1560j Ω
R1-R2 DC resistance	45.5 Ω ± 10% (@20°C)
Stator DC resistance	55.0 Ω ± 10% (@20°C)
Accuracy	±8'
Operating temp.	-50°C / +155°C

## MYM-27 Schematic and Technical Drawings



Input:  $E(R_1-R_2) = E \sin(\omega t)$

Output:  $E(S_1-S_3) = Tr \times E(R_1-R_2) \cos\theta$   
 $E(S_2-S_4) = Tr \times E(R_1-R_2) \sin\theta$

T<sub>r</sub>: Transformation ratio

